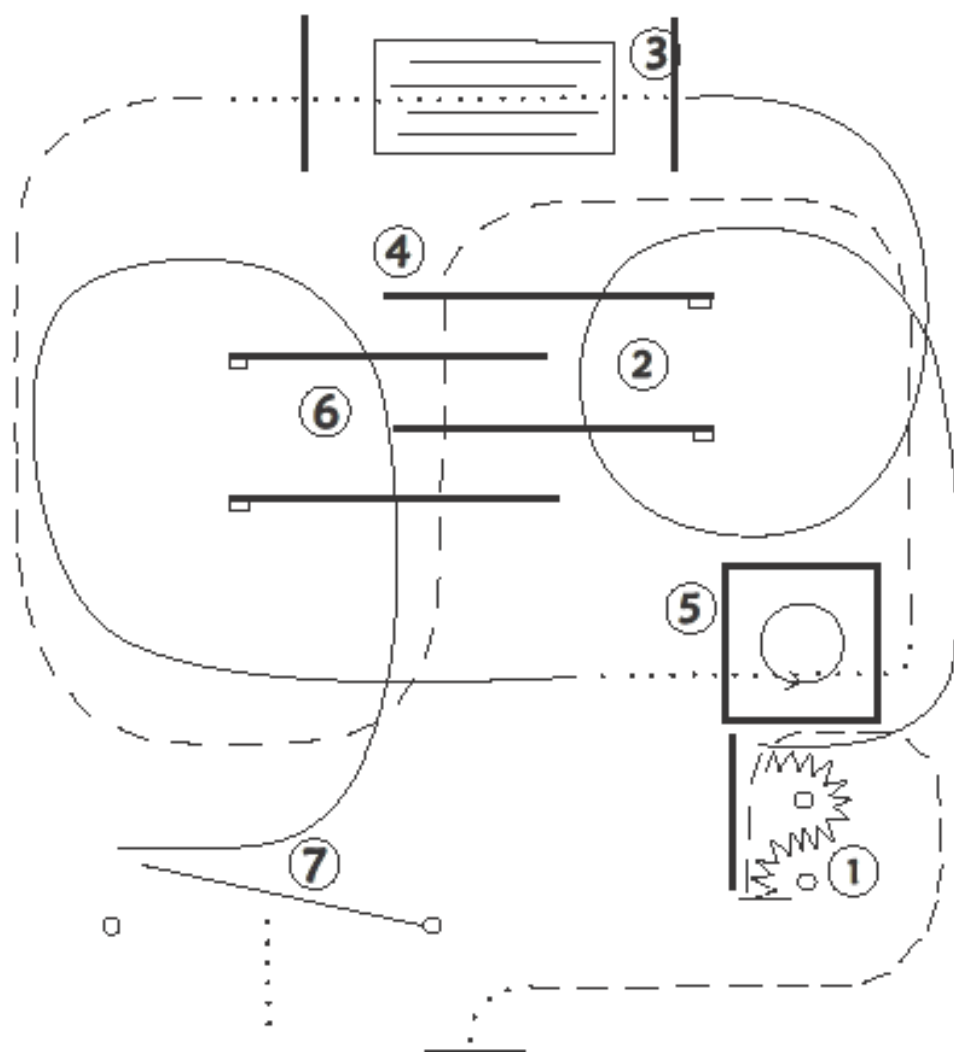
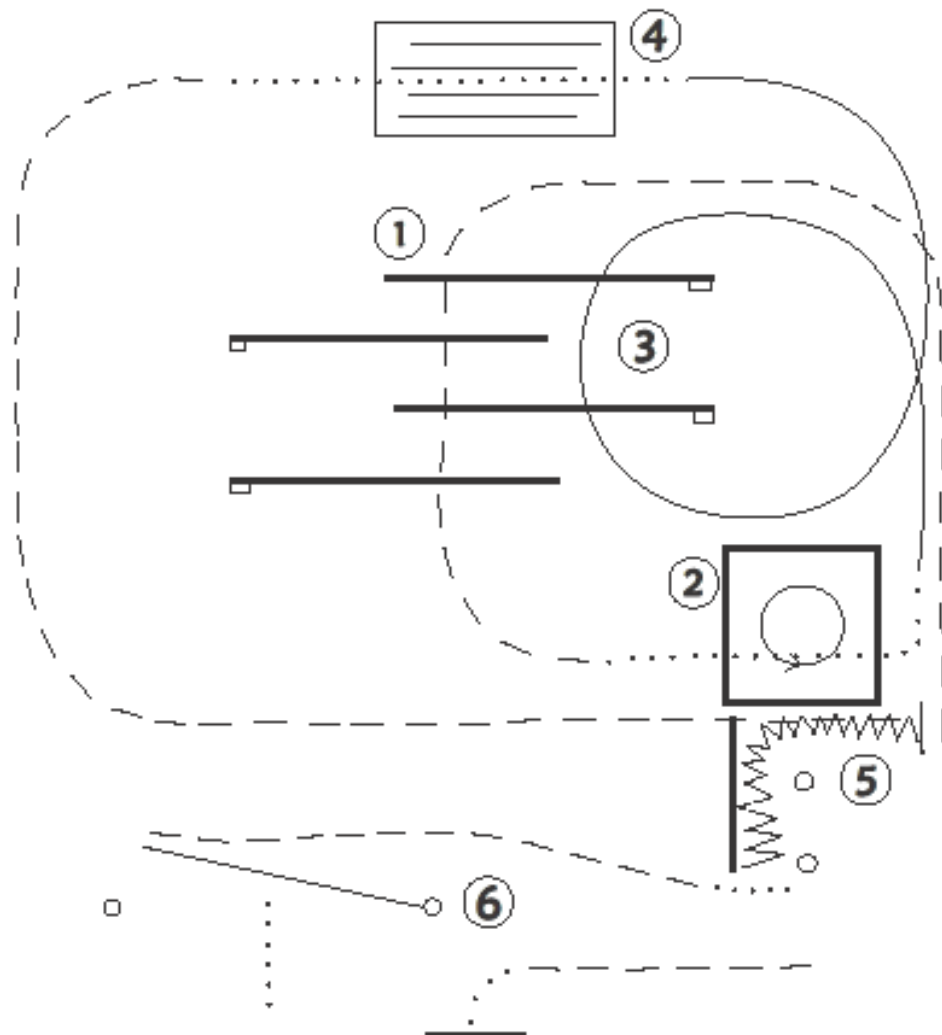


TH LK 1/2 A/B



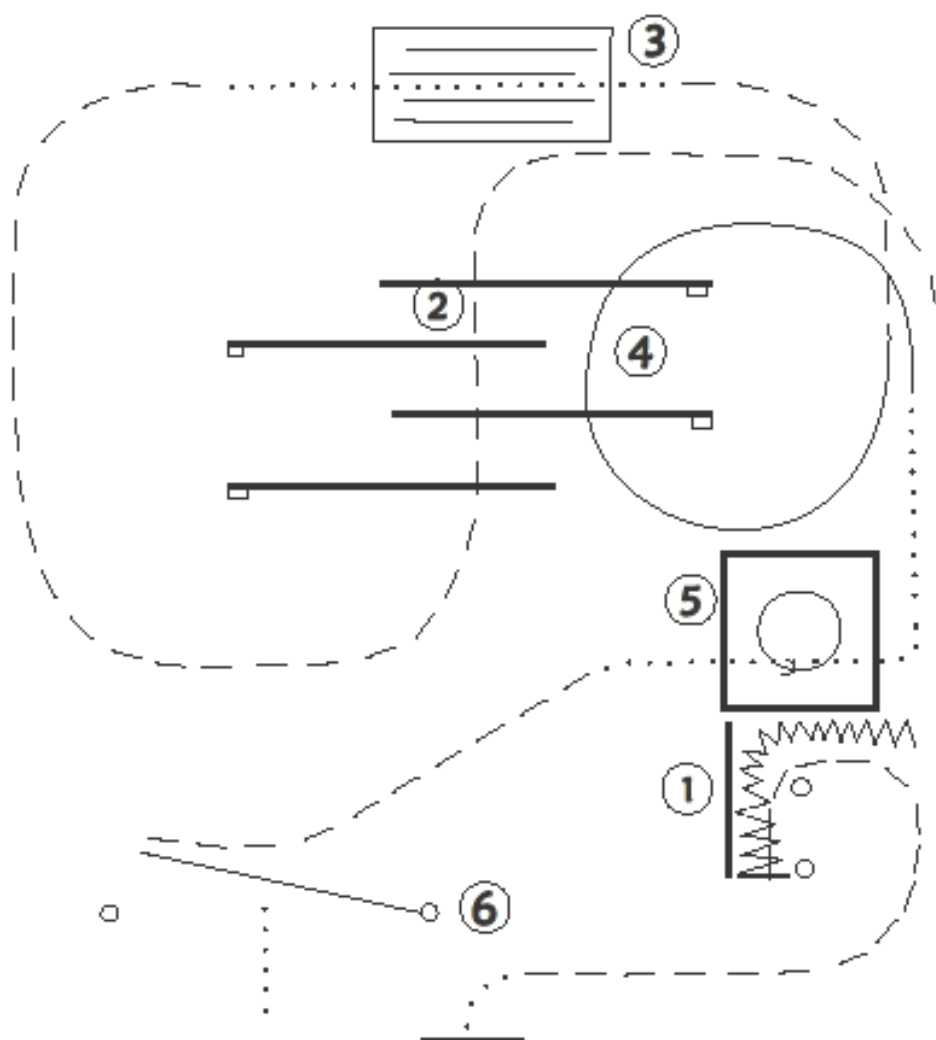
- | | |
|--------------------------------|------------------|
| ① Jog in, Back up,
Lope out | ④ Jog over |
| ② Lope over | ⑤ Box 360° links |
| ③ Brücke mit
Walk over | ⑥ Lope over |
| | ⑦ Tor |

TH LK 3 A/B

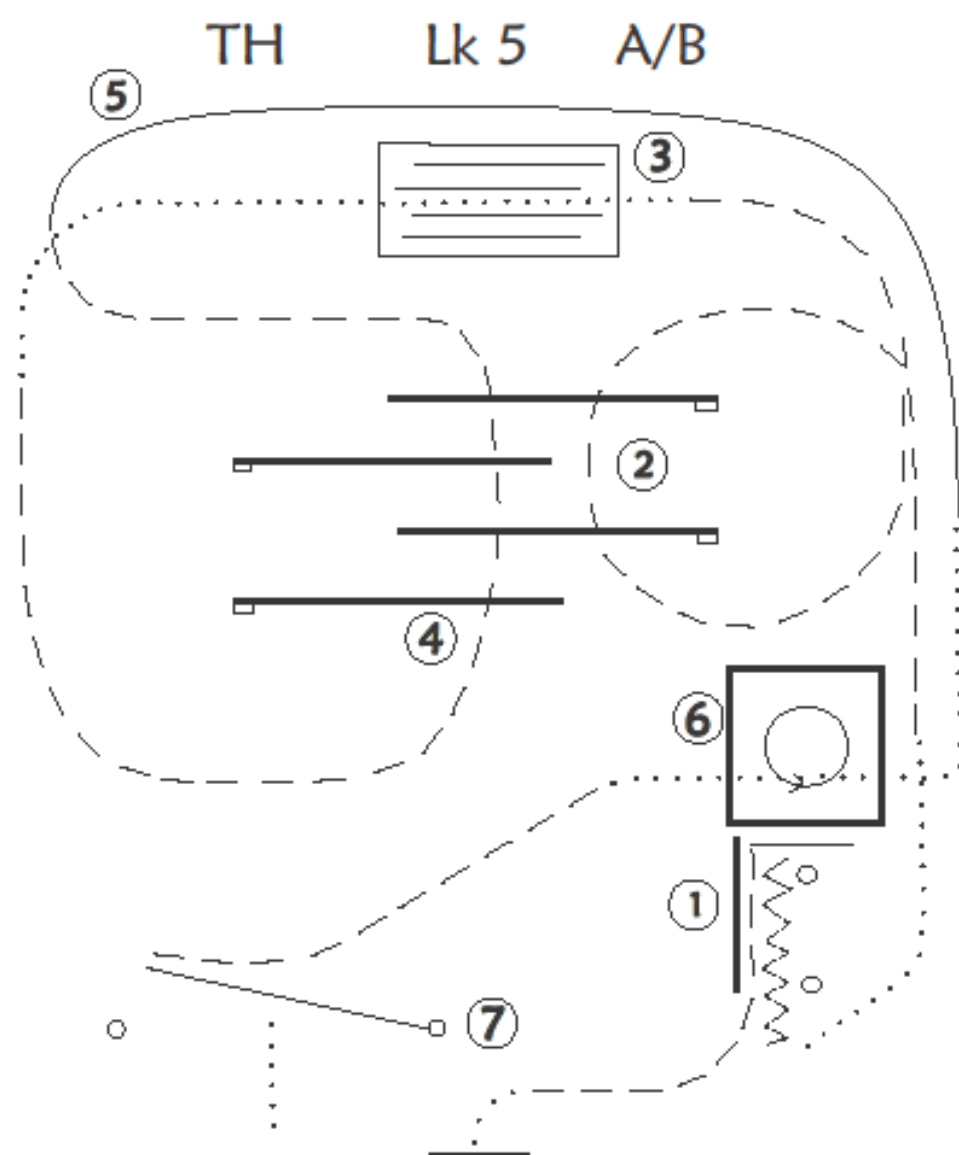


- | | |
|------------------|----------------|
| ① Jog over | ④ Brücke |
| ② Box 360° links | ⑤ Jog, Back up |
| ③ Lope over | ⑥ Tor |

TH Lk 4 A/B

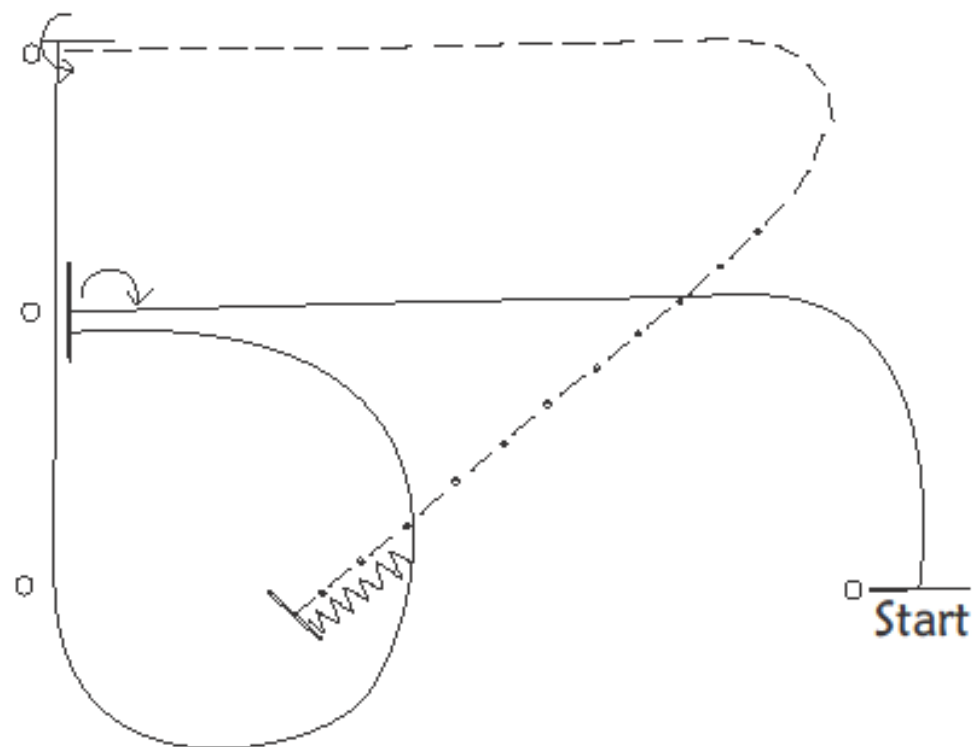


- | | |
|-------------------|------------------|
| ① Jog in, Back up | ④ Lope over |
| ② Jog over | ⑤ Box 360° links |
| ③ Brücke | ⑥ Tor |



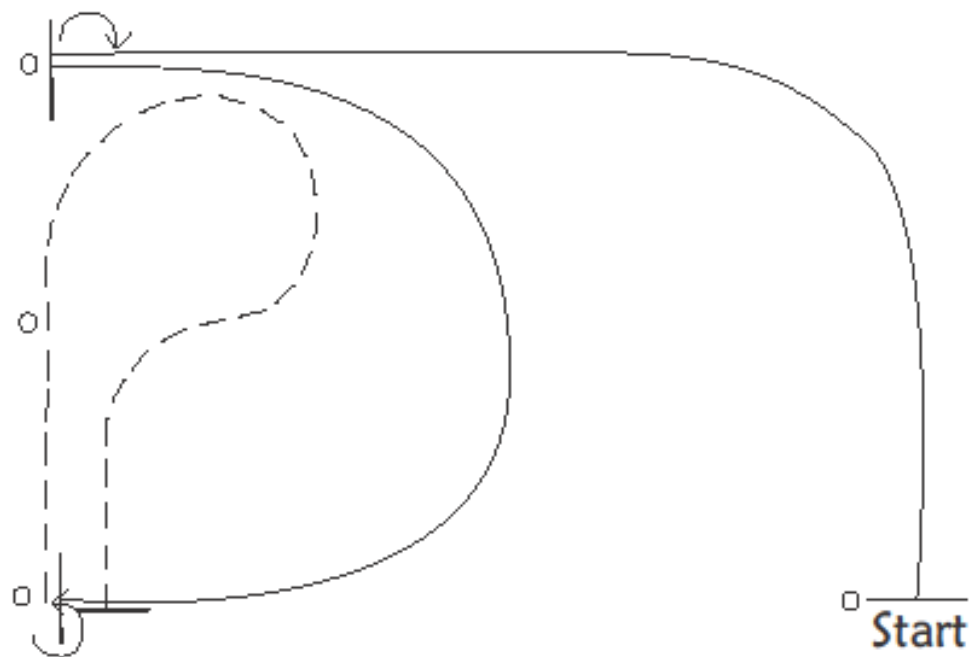
- | | |
|-------------------|------------------|
| ① Jog in, Back up | ④ Jog over |
| ② Jog over | ⑤ Rechtsgalopp |
| ③ Brücke | ⑥ Box 360° links |
| | ⑦ Tor |

WHS LK 1/2 A+B



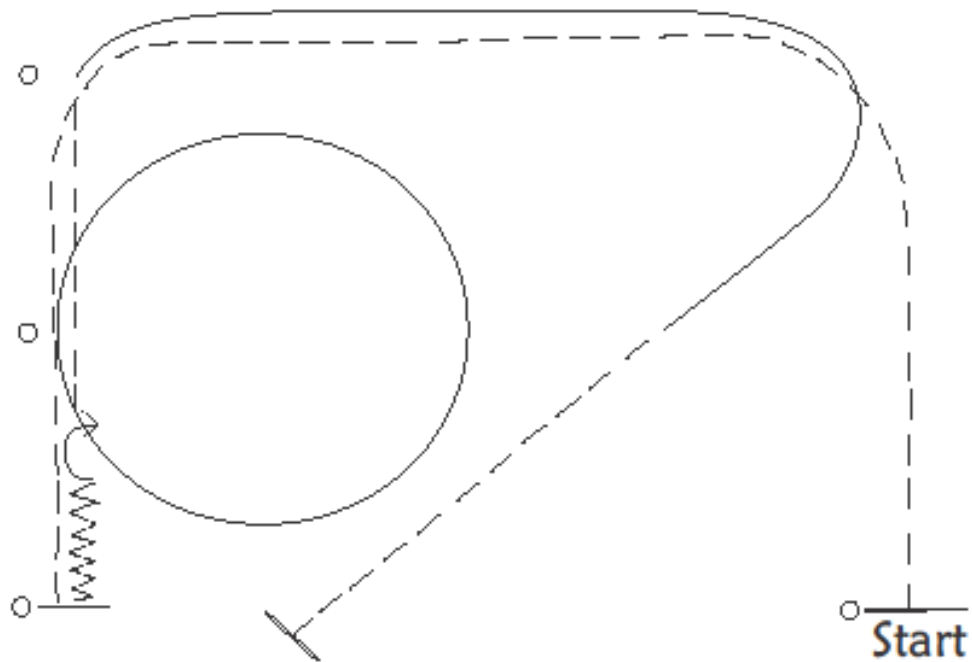
- ① Linksgalopp, Stop, 180°HHW rechts,
- ② Rechtsgalopp, Stop, 270°HHW links,
- ③ Jog, extended Jog, Stop, Back

WHS LK 3 A+B



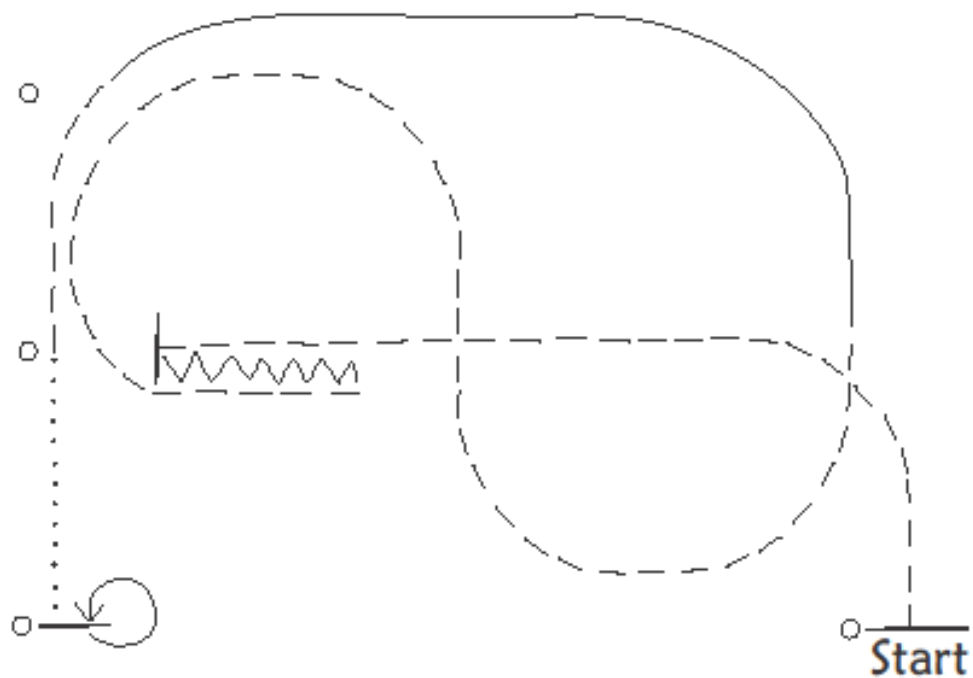
- ① Linksgalopp, Stop, 180° HHW rechts,
- ② Rechtsgalopp, Stop, 270° HHW links,
- ③ Trab, Kehrtvolte, Stop

WHS LK 4 A+B



- ① Trab, Zirkel linksgalopp, Trab
- ② Stop, Back up, 180° HHW rechts, Trab
- ③ Rechtsgalopp, Trab, Stop

WHS LK 5 A+B



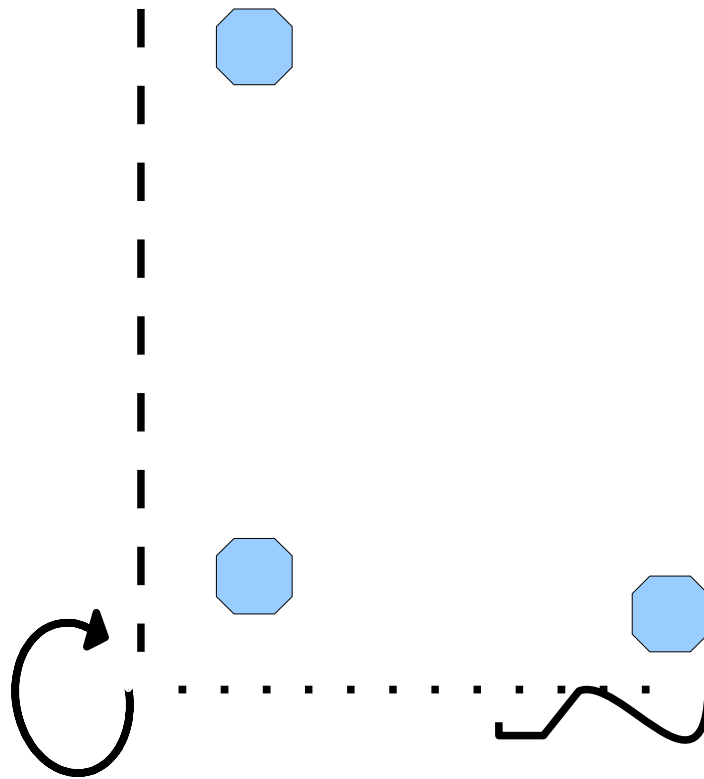
- ① Trab, Stop, Back
- ② Trab, Linksgalopp, Trab
- ③ Schritt, Stop, 360° HHW links

SSH LK 1-3

Von A nach B im Jog 270° Turn rechts

Schritt bis C 3 Tritte Back

Aufstellung zur Inspektion



Western Riding
Suho
Reining

LK 1-3
LK ½
LK ½
LK 3 a
LK 3 b
LK 4a /b

Pattern 3
Pattern 1
Pattern 7
Pattern 1
Pattern 2a
Pattern 8a